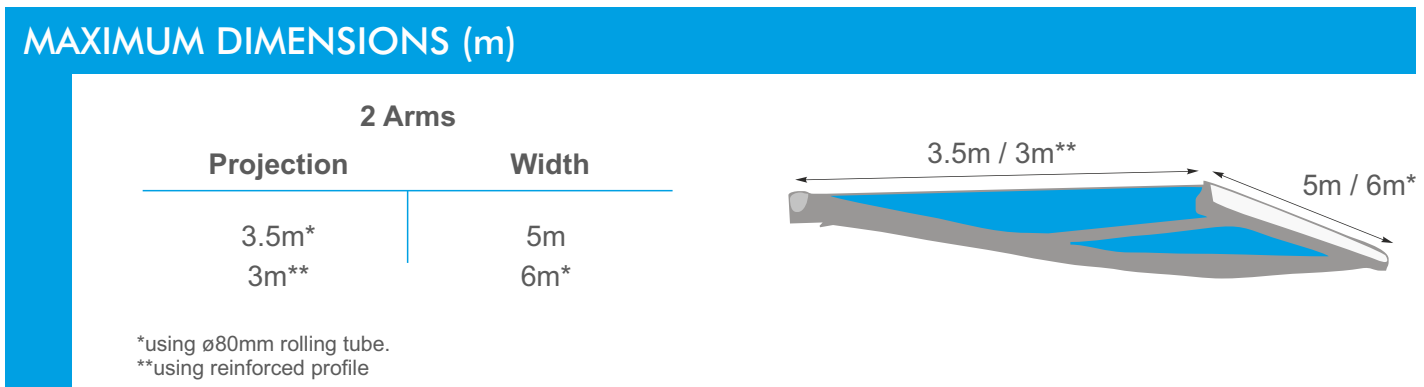
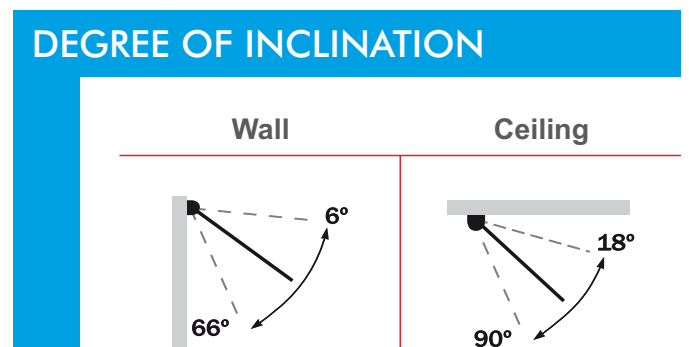
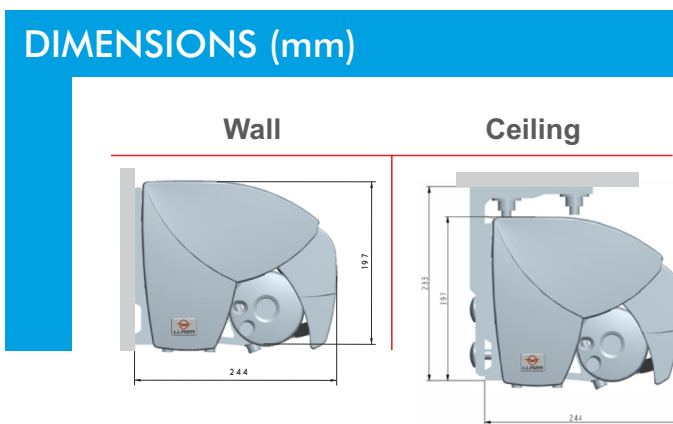
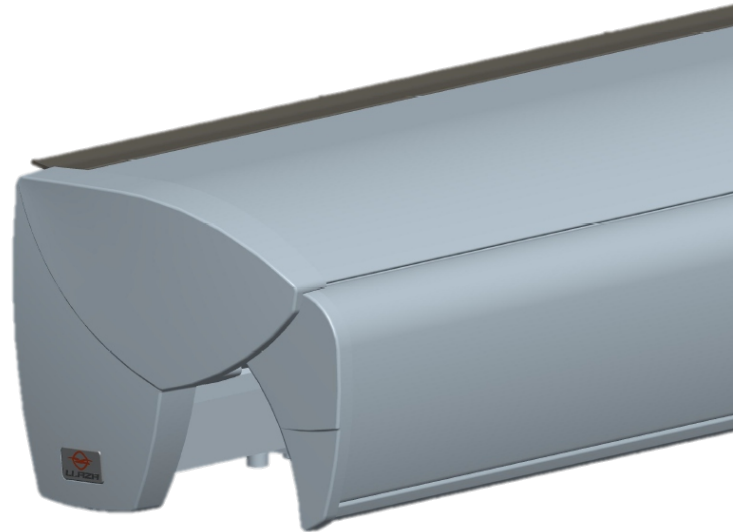


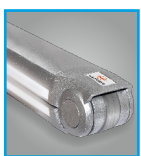
MODULE BOX

SEMI CASSETTE BENEFITS:

- Back bar system for ease of fitting
- Full length fabric scoop
- New ridged teardrop front rail
- Heavy duty casting
- Easy arm adjustment and lock
- Ideally for larger commercial
- Sleek design
- Made in the UK

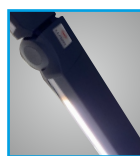


ARM OPTIONS



ONYX

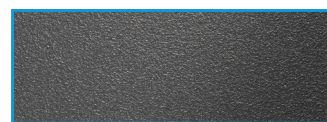
The concealment of the mechanical parts in the joint ensure a superb appearance.



ONYX LUX

With integrated LED lighting on the folding arms and across the front rail. Onyx Lux lights have a dimmer adjustment via remote control.

FINISHES



TEXTURED ANTHRACITE RAL 7016

- Manual
- Motorised
- Automated